

# CHARMILL

## RESIDENTIAL



### Jamestown Road, Camden NW1

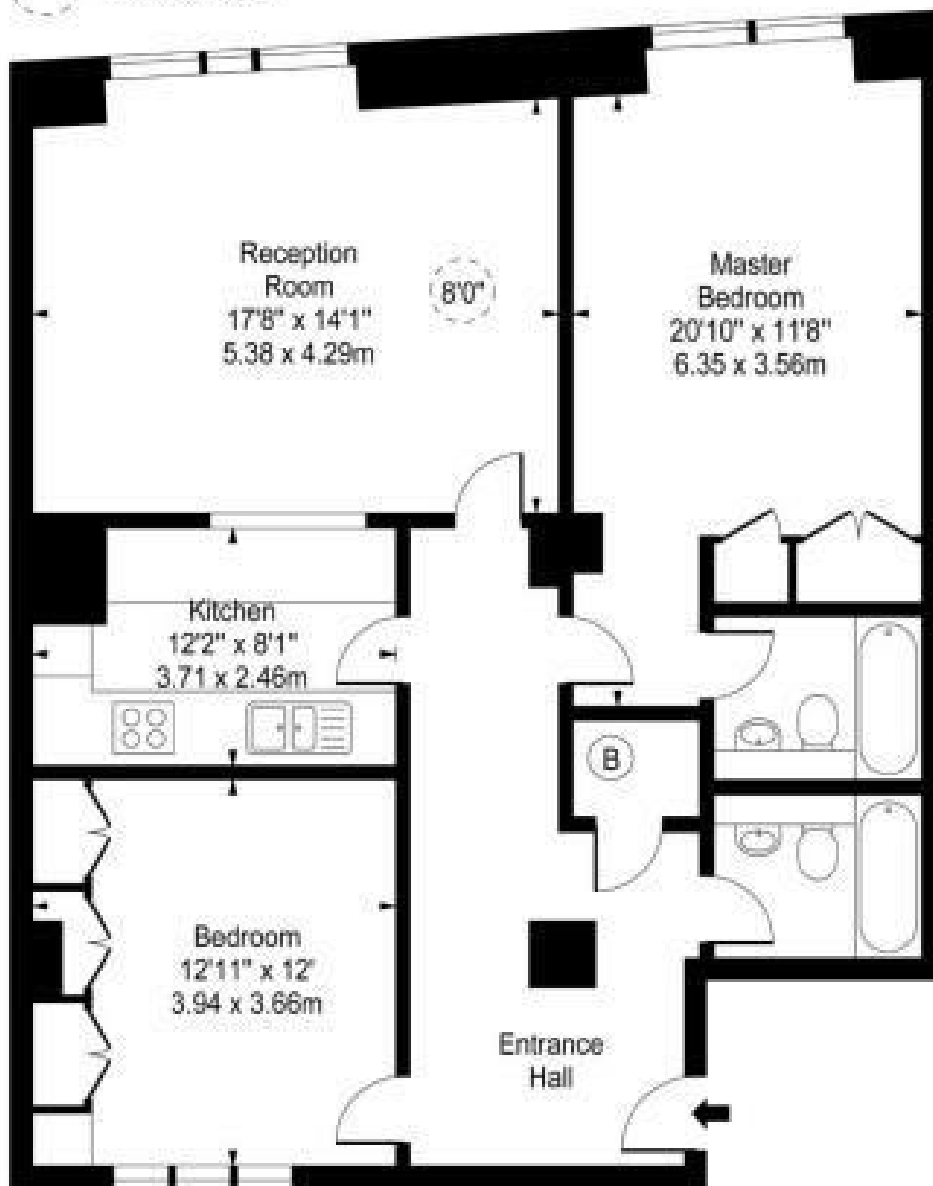
A two double bedroom, two-bathroom apartment arranged on the fourth floor of a portered purpose-built block in the heart of Camden Town. The apartment is in excellent condition throughout and comprises a reception/dining room with wooden flooring, semi open plan fully fitted kitchen with hatch leading through to the reception room, principal bedroom with fitted wardrobes and en-suite bathroom, further double bedroom, and a family bathroom suite. Gilbey House benefits from a porter and one secure underground parking space.

- Two bedrooms
- Two bathrooms
- Porter
- Furnished
- Purpose built block
- Underground parking
- Fourth floor

£750

# Gilbey House, Jamestown Road

○ - Ceiling Height



Approx Gross Internal Area    **1045 Sq Ft - 97.08 Sq M**

Energy Efficiency Rating		Current	Potential
Very energy efficient - lower running costs			
(92 plus) A			
(81-91) B			
(69-80) C			
(55-68) D			
(39-54) E			
(21-38) F			
(1-20) G			
Not energy efficient - higher running costs			
England & Wales			
EU Directive 2002/91/EC			

Environmental Impact (CO <sub>2</sub> ) Rating		Current	Potential
Very environmentally friendly - lower CO <sub>2</sub> emissions			
(92 plus) A			
(81-91) B			
(69-80) C			
(55-68) D			
(39-54) E			
(21-38) F			
(1-20) G			
Not environmentally friendly - higher CO <sub>2</sub> emissions			
England & Wales			
EU Directive 2002/91/EC			

